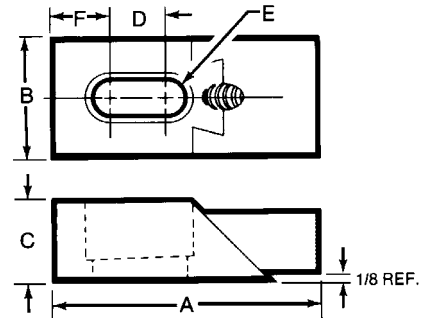
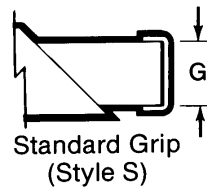


Nuzzler® Edge Clamps: Standard Grip

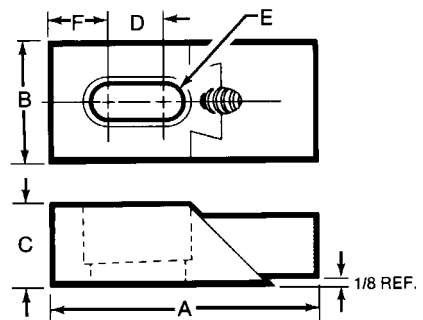
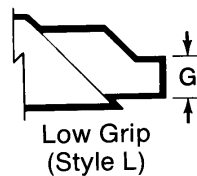
- Clamp Material: 1018 Steel
- Black Oxide Finish
- Features a double action, adjustable nose which exerts clamping pressures both downward and inward through a 45 degree angle.
- Noses have serrations for better gripping of non-finished or semi-finished workpieces
- Tapered slots prevent clamp from sliding off the workpiece during tightening
- Length "A" is calculated with nose raised 1/8"
- Clamp Washer is included with each Edge Clamp
- Standard Grip includes removable aluminum nose cap, which prevents damage to your workpiece



Part No.	A	Nose Style	B	C	D	Bolt Size E	F	G	Wrench Size	Wt. (lbs/100pcs)
33818	1-7/8	S	1	5/8	1/4	5/16	13/32	5/8	5/32	30
33820	2-3/8	S	1	5/8	3/4	5/16	5/16	5/8	5/32	35
33822	2-7/8	S	1	5/8	1-1/4	5/16	5/16	5/8	5/32	40
33802	2-5/16	S	1-1/4	5/8	3/8	3/8	7/16	5/8	3/16	43
33891	2-3/4	S	1-1/4	5/8	11/16	3/8	1/2	5/8	3/16	49
33806	3-5/16	S	1-1/2	3/4	3/4	1/2	11/16	3/4	1/4	88
33711	3-5/16	S	1-1/2	3/4	5/8	5/8	11/16	3/4	1/4	88
33824	3-7/8	S	1-1/2	7/8	1-1/4	1/2	1/2	7/8	1/4	112
33715	3-7/8	S	1-1/2	7/8	1-1/4	5/8	1/2	7/8	1/4	112
33804	4-1/8	S	1-1/4	5/8	2	3/8	11/16	5/8	3/16	73
33893	4-11/16	S	1-1/4	5/8	2-3/16	3/8	15/16	5/8	3/16	76
33808	5-3/16	S	1-1/2	3/4	2-1/2	1/2	5/8	3/4	1/4	123
33713	5-3/16	S	1-1/2	3/4	2-1/2	5/8	5/8	3/4	1/4	123
33826	5-5/16	S	1-1/2	7/8	2	1/2	7/8	7/8	1/4	155
33717	5-5/16	S	1-1/2	7/8	2	5/8	7/8	7/8	1/4	155
33810	5-13/16	S	1-1/2	1-1/4	2-1/4	1/2	1-1/16	3/4	1/4	216
33813	7-1/8	S	1-1/2	1-1/4	3-5/16	1/2	1-3/16	3/4	1/4	255
33828	7-1/4	S	1-1/2	7/8	3	1/2	1-3/8	7/8	1/4	205

Nuzzler® Edge Clamps: Low Grip

- Clamp Material: 1018 Steel
- Black Oxide Finish
- Features a double action, adjustable nose which exerts clamping pressures both downward and inward through a 45 degree angle.
- Noses have serrations for better gripping of non-finished or semi-finished workpieces
- Tapered slots prevent clamp from sliding off the workpiece during tightening
- Length "A" is calculated with nose raised 1/8"
- Low Profile Nose provides a greater machining clearance
- Clamp Washer is included with each Edge Clamp



Part No.	A	Nose Style	B	C	D	Bolt Size E	F	G	Wrench Size	Wt. (lbs/100pcs)
33817	1-7/8	L	1	5/8	1/4	5/16	13/32	1/8	5/32	25
33819	2-3/8	L	1	5/8	3/4	5/16	5/16	1/8	5/32	29
33821	2-7/8	L	1	5/8	1-1/4	5/16	5/16	1/8	5/32	35
33801	2-5/16	L	1-1/4	5/8	3/8	3/8	7/16	1/4	3/16	38
33890	2-3/4	L	1-1/4	5/8	11/16	3/8	1/2	1/4	3/16	44
33805	3-5/16	L	1-1/2	3/4	3/4	1/2	11/16	3/8	1/4	81
33710	3-5/16	L	1-1/2	3/4	5/8	5/8	11/16	3/8	1/4	81
33823	3-7/8	L	1-1/2	7/8	1-1/4	1/2	1/2	1/4	1/4	100
33714	3-7/8	L	1-1/2	7/8	1-1/4	5/8	1/2	1/4	1/4	100
33803	4-1/8	L	1-1/4	5/8	2	3/8	11/16	1/4	3/16	63
33892	4-11/16	L	1-1/4	5/8	2-3/16	3/8	15/16	1/4	3/16	73
33807	5-3/16	L	1-1/2	3/4	2-1/2	1/2	5/8	3/8	1/4	117
33712	5-3/16	L	1-1/2	3/4	2-1/2	5/8	5/8	3/8	1/4	117
33829	5-1/4	L	2	1-1/4	1-3/8	3/4	27/32	3/8	5/16	235
33825	5-5/16	L	1-1/2	7/8	2	1/2	7/8	1/4	1/4	141
33716	5-5/16	L	1-1/2	7/8	2	5/8	7/8	1/4	1/4	141
33809	5-13/16	L	1-1/2	1-1/4	2-1/4	1/2	1-1/16	3/8	1/4	207
33812	7-1/8	L	1-1/2	1-1/4	3-5/16	1/2	1-3/16	3/8	1/4	252
33827	7-1/4	L	1-1/2	7/8	3	1/2	1-3/8	1/4	1/4	189